

Siskiyou County

Siskiyou County Office of Education

Contact: Marian Murphy-Shaw • mshaw@siskiyoucoe.net

“The many individuals and community projects in Siskiyou County that provide essential arts education opportunities to our youth are vital partners in providing a balanced and meaningful education. We owe them our thanks, support and praise.”

– Kermith R. Walters, Siskiyou County Superintendent of Schools



Siskiyou County Office of Education

The Siskiyou County Office of Education celebrates the K-12 schools in its 27 districts for their extensive use of local art organizations and the arts community to bring multiple experiences to their students in both the school day and after school programs. While a few examples are highlighted here, it is by no means a complete representation of the many programs and local connections



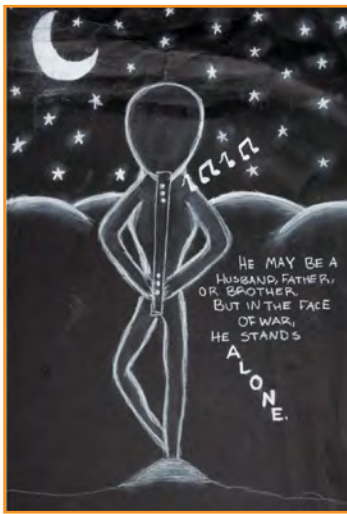
schools make to invest in the arts education of their students.

A spectacular opportunity was realized county wide through the Student Support and Academic Enrichment (SSAE) Grants in the Arts and partnership with



Siskiyou County

the Northern California Arts Education Network. Each participating teacher focused on a local area of need and student interest to develop lesson plans. Through this project local arts teachers and their administrators were able to then purchase and put into immediate use a wide variety of locally determined arts materials. They ranged from pastels and percussion to pottery wheels and performing arts staging. Instruments needed to bring school music programs back to life infused new energy



at many small K-8 school sites. Students across all grades, including the Siskiyou County Office of Education special education classes, now have a collection of shared lessons and significant resources that will last for years and reduce the gap small rural schools often

experience in having access to quality arts education.

Music by the Mountain is a non-profit organization committed to bringing extraordinary classical musicians to our rural, yet vibrant community and providing educational outreach for children and students of all ages. Two

programs per year are developed to bring quality classical music performances to the county's youth. The spring program will feature the Pacific Crest



"The Flute Player" by Dennis Smith.

Chamber Players aimed at exposing local students to the beauty of classical music and the joy of playing musical instruments.

The Siskiyou County Arts Council works with multiple partners and projects countywide. Last spring the Siskiyou County Office of Education and Siskiyou County Arts Council culminated a California Arts Council Veterans in the Arts grant with student field trips to the Living Memorial Sculpture Garden in addition to a teacher workshop on locally developed curriculum based on the memorial, and a curated professional show in partnership with a local gallery, all highlighting the power of art to tell one's story.



High schools across Siskiyou County are supported to participate in *Poetry Out Loud* thanks to the Siskiyou County Arts Council. Local teachers, poetry coaches, community volunteer judges, and an event coordinator bring the art of the spoken word to life at a county poetry competition. The winning poet is then supported to participate at the state Poetry Out Loud event.

